

SMD COMMON MODE CHOKES

Toroidal Series



Features

- Wide variety of inductor size and current ratings available
- Designed for DC/DC converters
- Dielectric strength: 1000Vrms
- Customer designs available



Application

- Common mode Chokes for DVC, DSC,OA, Adaptor,TV,DVD,Blue-ray Recorder

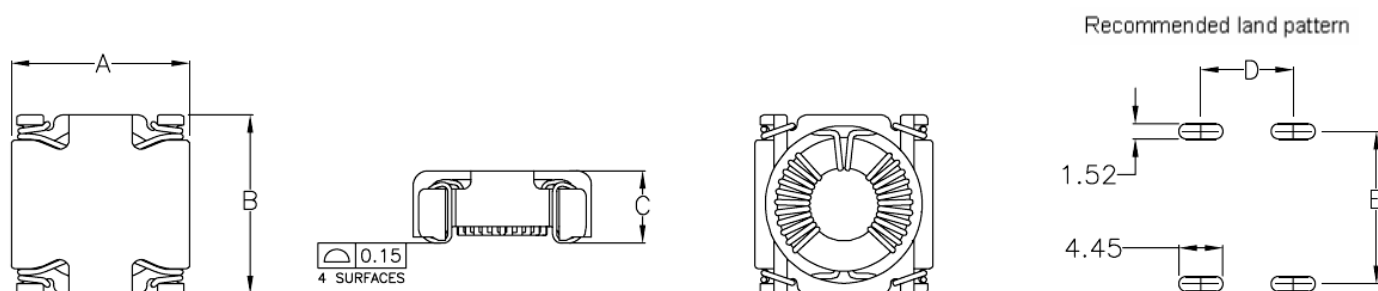
Specifications

Size	Fig	A (Max)	B (Max)	C (Max)	D (Nom)	E (Nom)
4L3-B	1	13.50	13.50	5.50	8.38	10.41
4L4-A	2	14.50	16.50	9.00	8.64	13.46
4L4-B	2	15.00	18.50	10.00	9.40	15.49
4L4-C	2	17.50	19.60	10.00	11.30	16.76
4L7	3	31.50	25.50	12.90	15.24	27.86

1. Operating temperature -40°C to 110°C , storage temperature -40°C to 125°C

Mechanical

Fig. 1

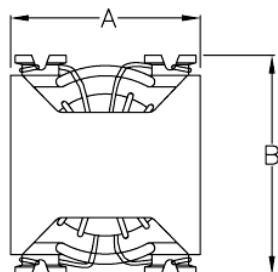


SMD COMMON MODE CHOKES

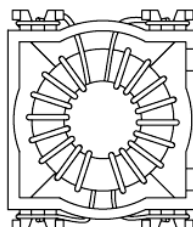
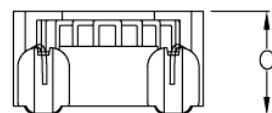
Toroidal Series



Fig. 2



0.15
4 SURFACES



Recommended land pattern

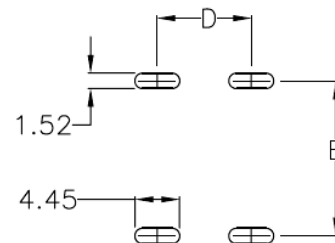
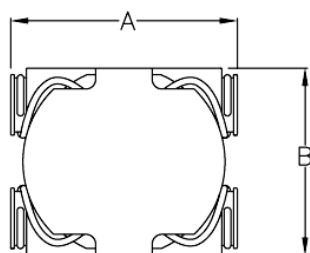
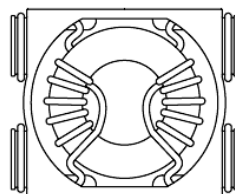
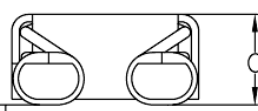


Fig. 3



0.15
4 SURFACES



Recommended land pattern

